



Green cities for climate and water resilience, sustainable economic growth, healthy citizens and environments

Green Social Areas Index in Campinas (São Paulo) - Brazil - Implementation of linear parks as nature-based solutions with a multidisciplinary perspective

Gabriel Dias Mangolini Neves

Municipal Secretariat of Green, Environment and Sustainable Development of
Campinas, São Paulo, Brazil.

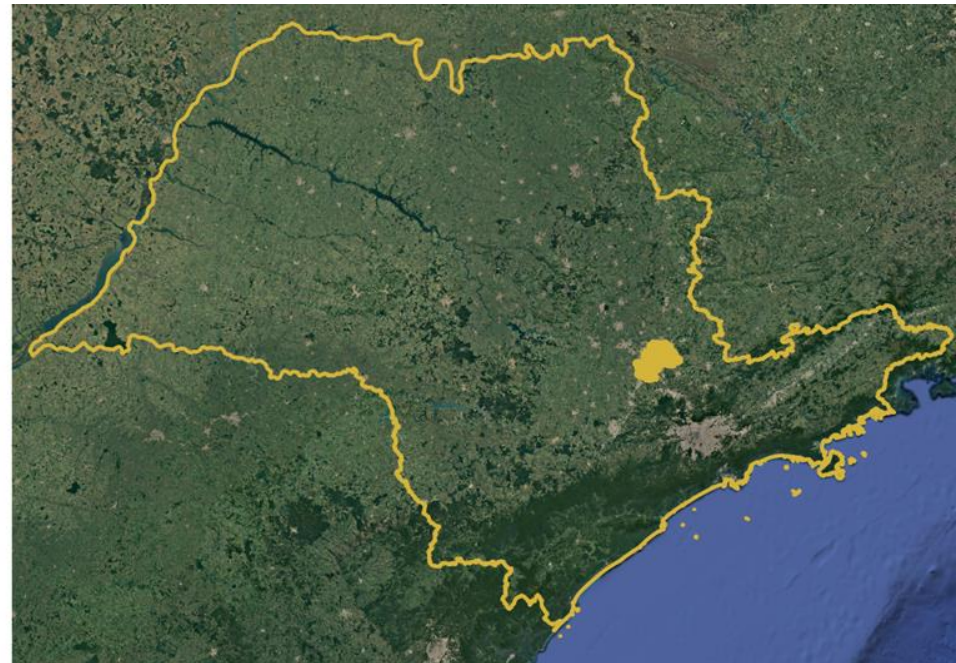
October 26, 2021

→ Campinas has

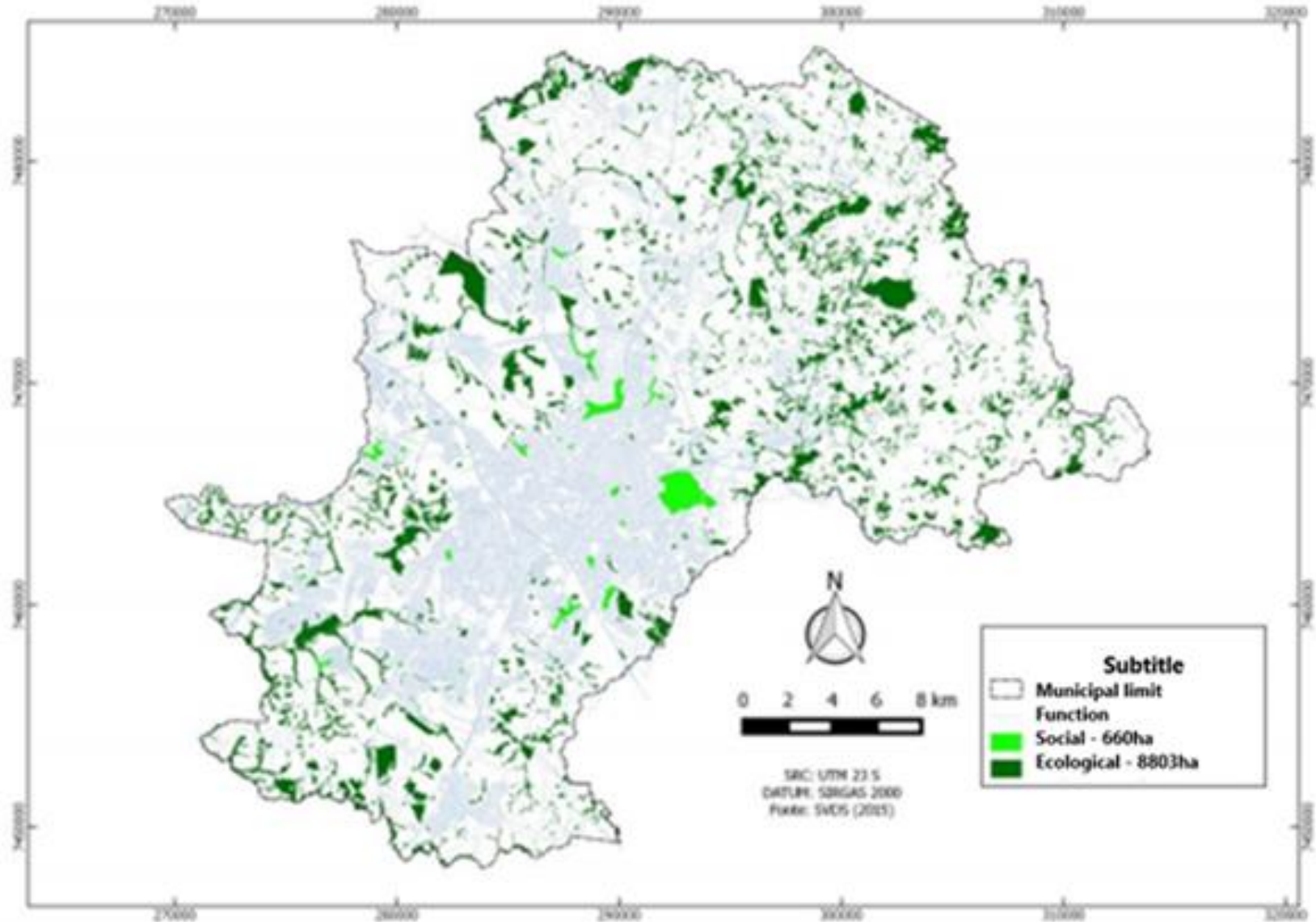
- ◆ an area of 796,4 Km²;
- ◆ approximately 1,160 million inhabitants;

→ It is part of the Metropolitan Region of Campinas

- ◆ approximately 3,120 million inhabitants;
- ◆ responsible of 9% of state's GDP.

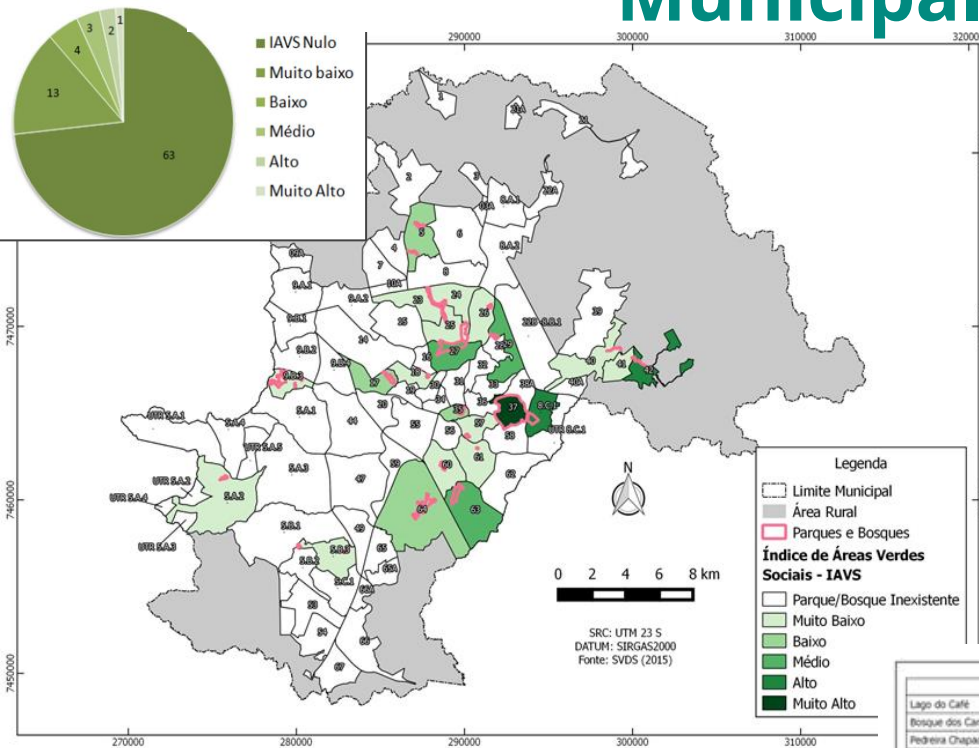


Municipal Green Plan - Diagnostics



- Index of Green Areas 2016: **87 m²/inhab**
- Index of Green Social Areas 2016: **6,2 m²/inhab**

Municipal Green Plan - Diagnostics

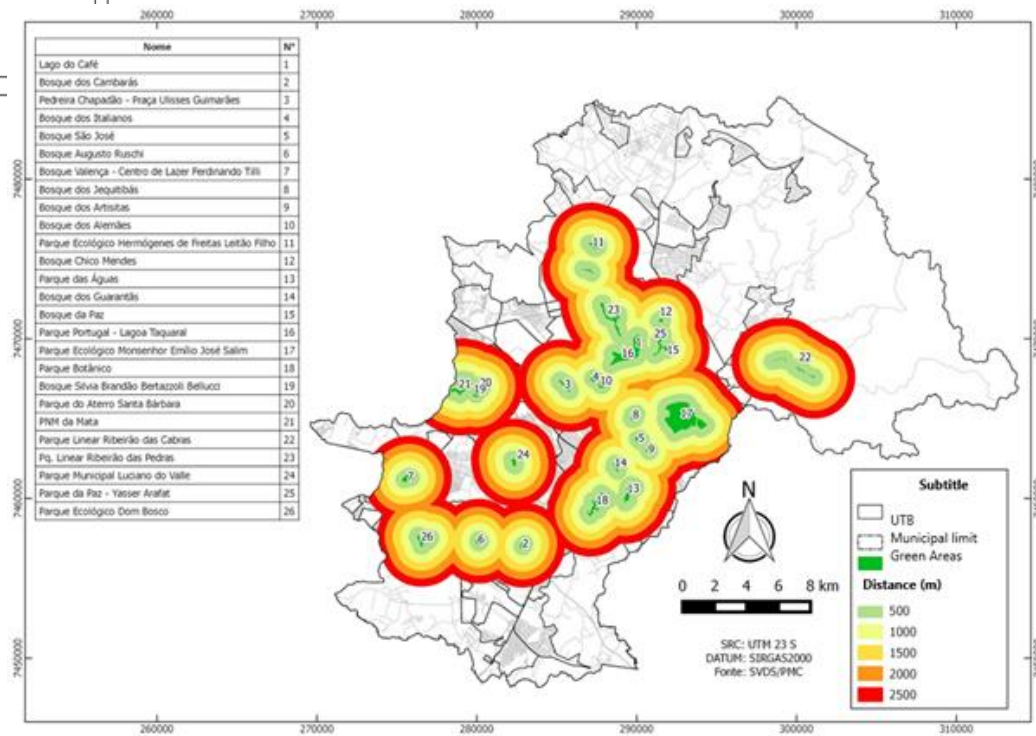


→ Index of Green Social Areas

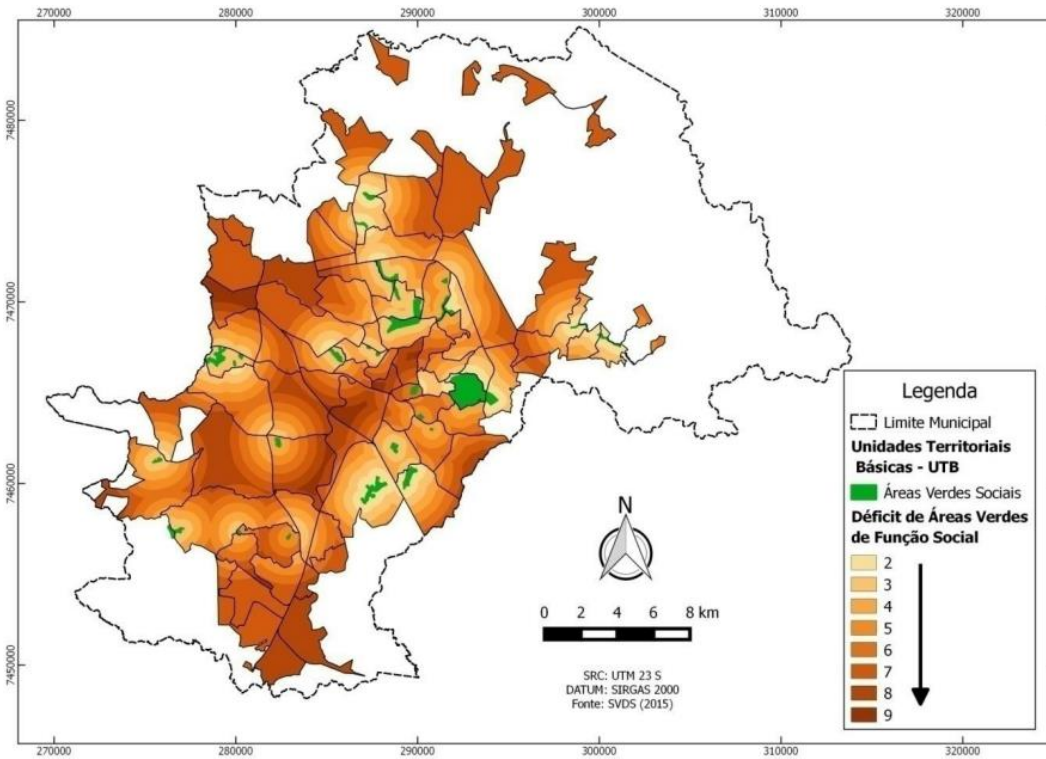
- ◆ m²/inhabitant/district;
- ◆ 73% of districts with 0 m²/inhab.

→ Accessibility

- ◆ Maximum 2.5 Km of walking;
- ◆ Sufficient for a 30-minute walk allowing access without the need for transportation.



Municipal Green Plan - Diagnostics

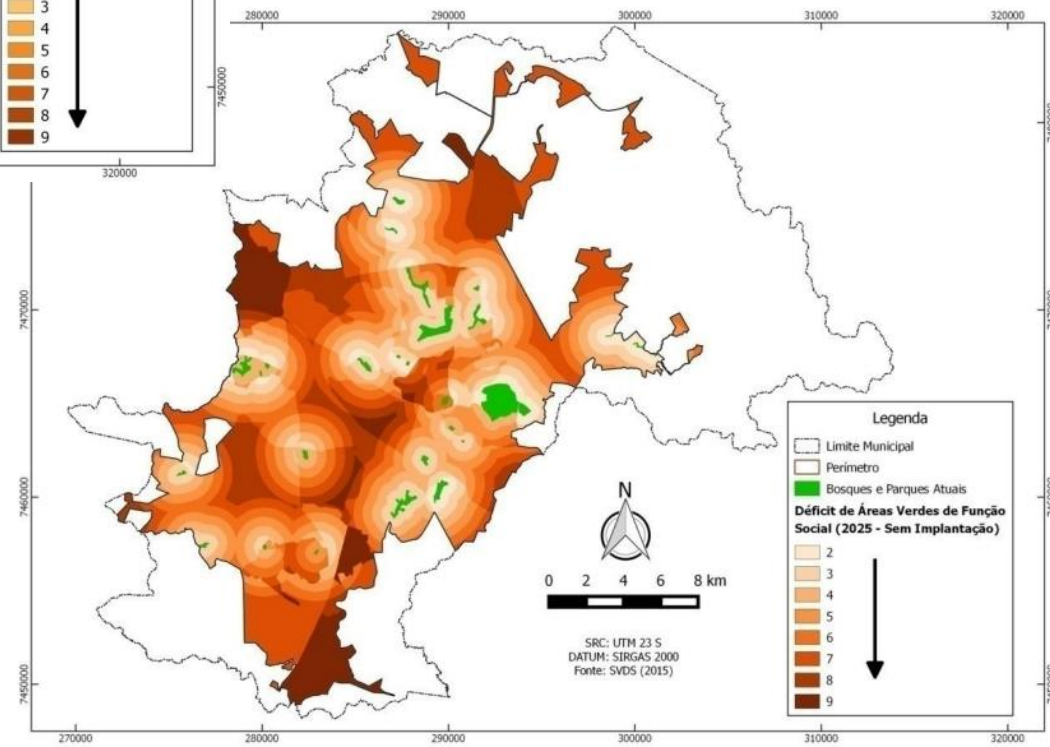


→ Index of Green Social Areas

- ◆ 6,2 m²/inhab
- ◆ Considering the year 2015

→ Index of Green Social Areas

- ◆ 5,3 m²/inhab
- ◆ Business as usual scenario
- ◆ Considering the year 2025



→ Linear parks enable:

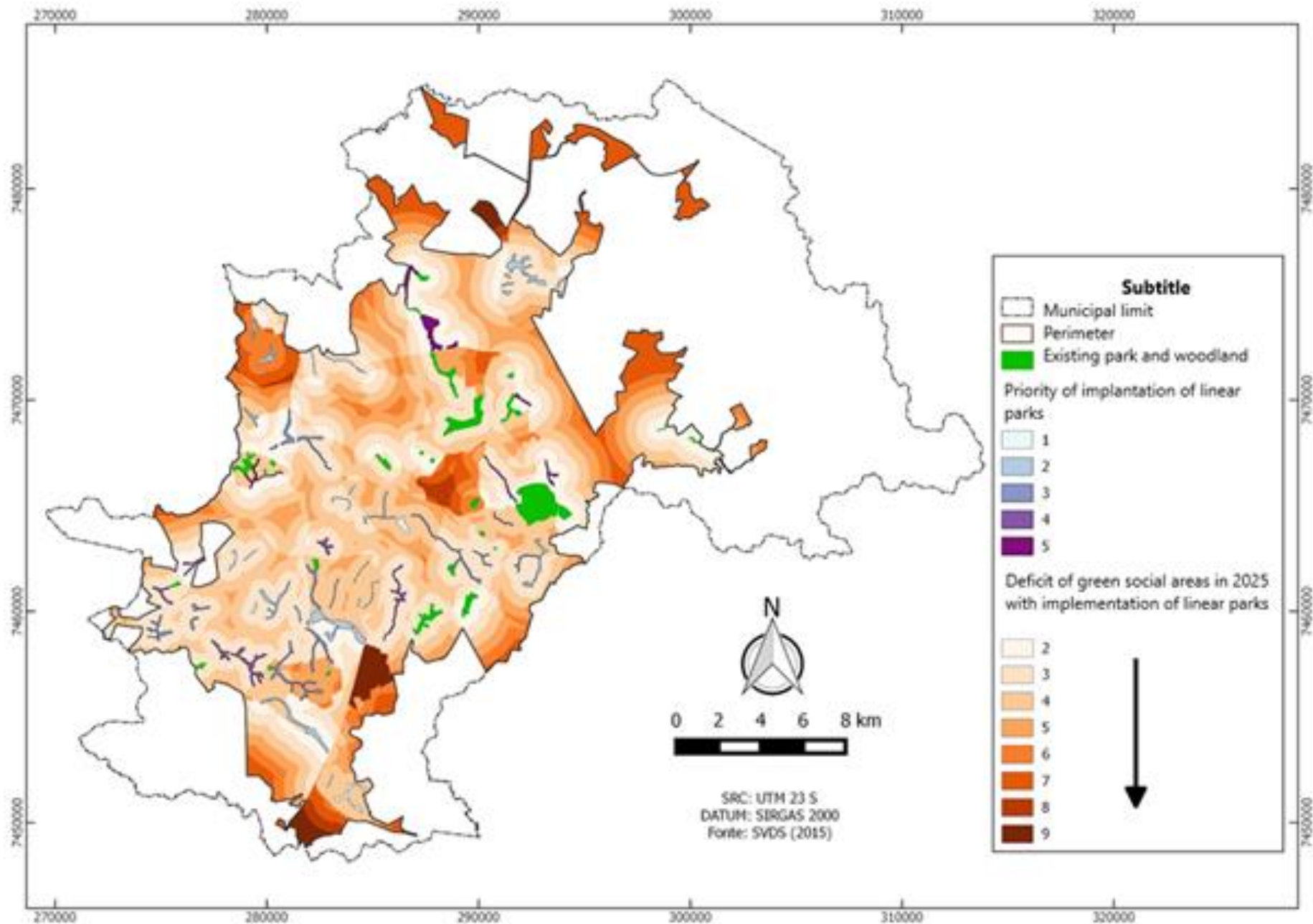
- ◆ the promotion of leisure and sport activities;
- ◆ non-motorized circulation;
- ◆ promotion of environmental education and citizenship, improving the population's quality of life;
- ◆ maintenance and recovery of biodiversity through restoration of riparian forests;
- ◆ rainwater management measures, increase in the flood zone;
- ◆ the possibility of ecosystem integration, which can also act as ecological corridors.

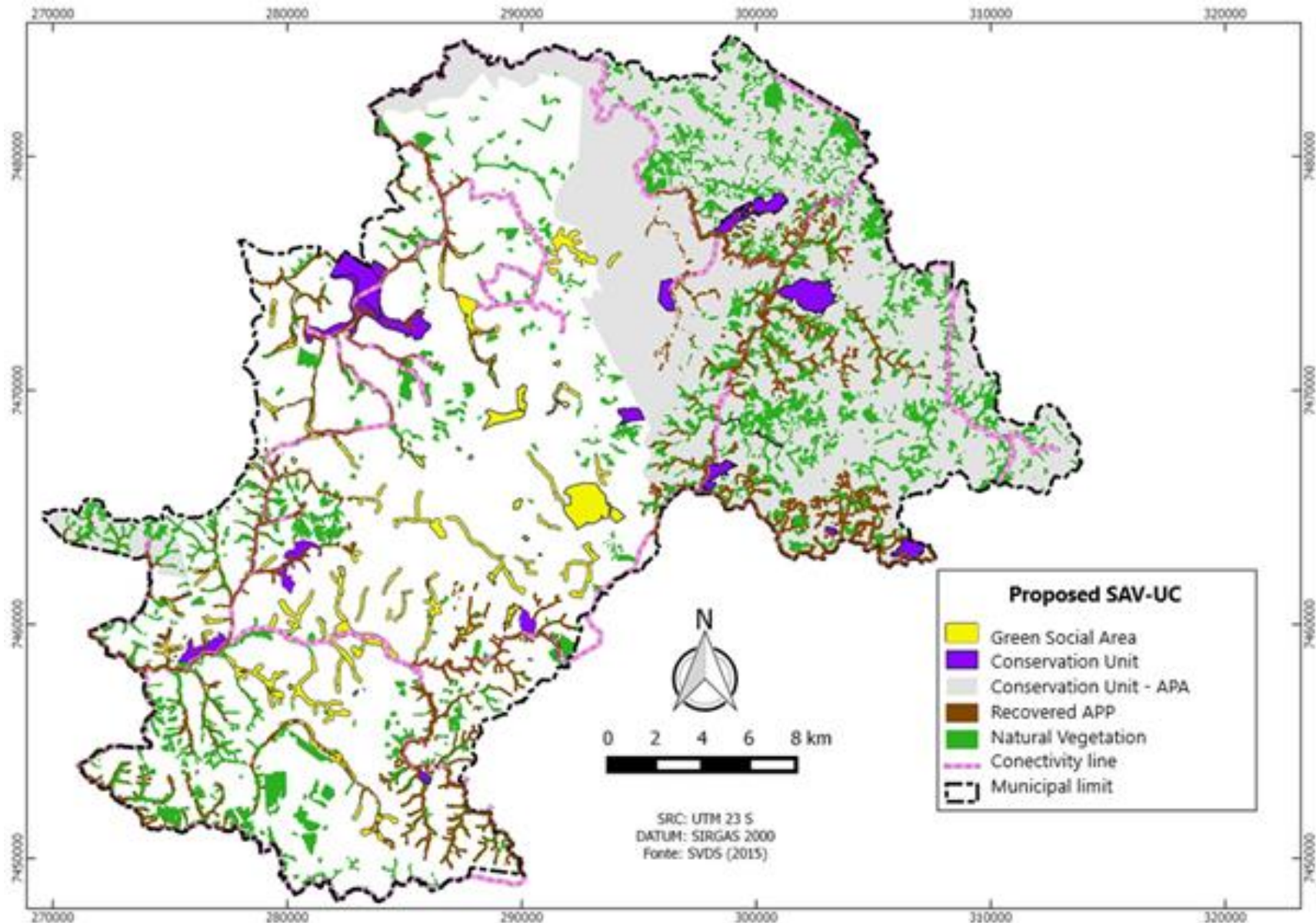
Within the scope of the NbS, green spaces are seen as indispensable components, also contributing to **increasing local resilience and promoting sustainable lifestyles, both the health and well-being of urban populations.**

Linear Park as a NbS.



Municipal Green Plan - Prognosis





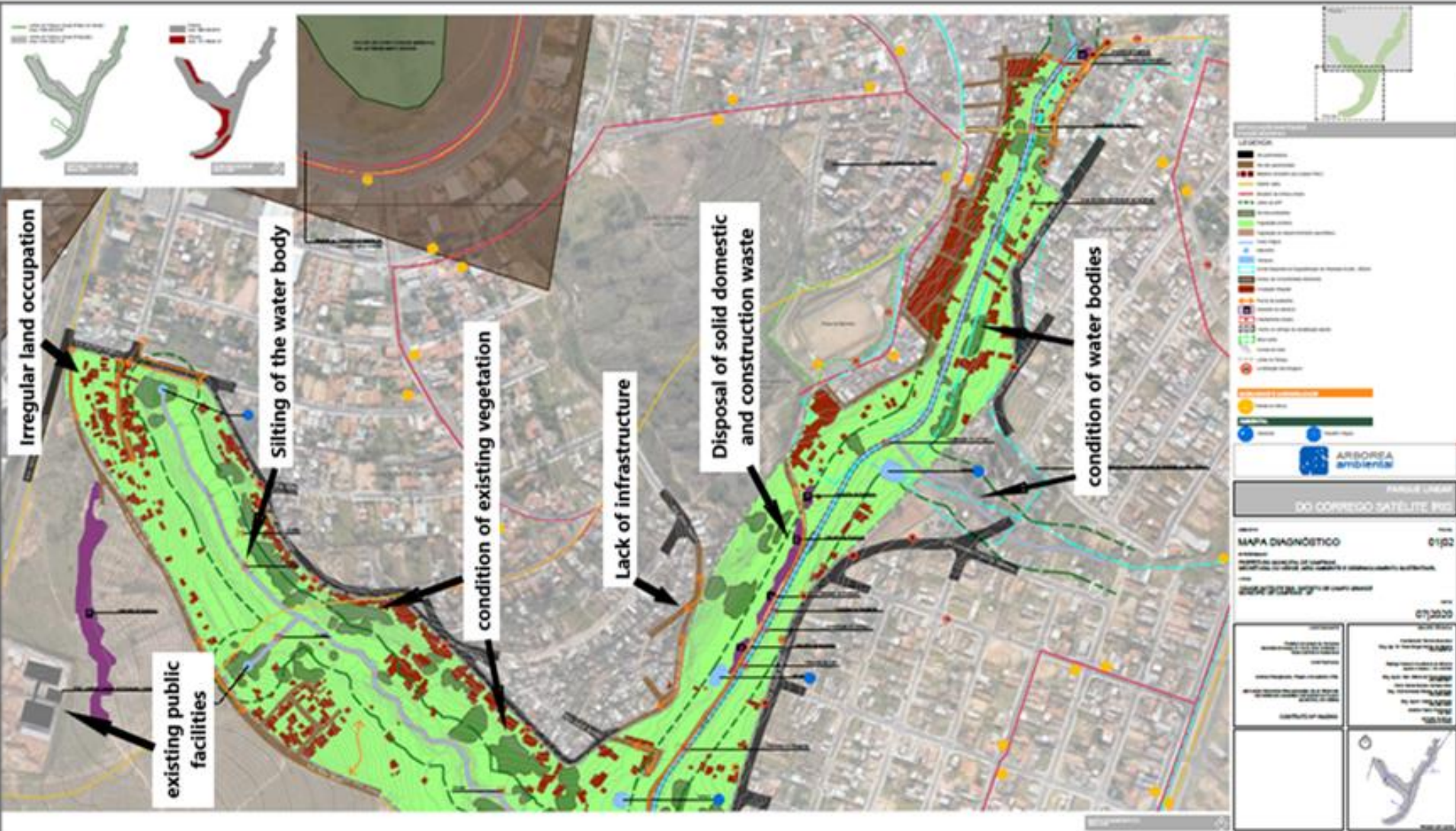
Consolidation of linear parks in municipal territorial planning in the System of Green Areas and Conservation Units (SAV-UC)

Private Areas

- Change of land subdivision legislation:
 - ◆ Approval of linear park projects by the Departments of Environment, Transport, Park and Gardens and People with Disabilities;
 - ◆ Technical criteria for approval of linear park projects.
- 20 basic projects e 7 executive projects approved and 2 stretches of parks implemented.



Contracting of Technical Feasibility Study



- Social function properly;
- Sports practice, leisure and recreation equipment;
- Urban mobility and accessibility;
- Landscape and urban ambience;
- Formation of large green areas;
- Recovering riparian forests.



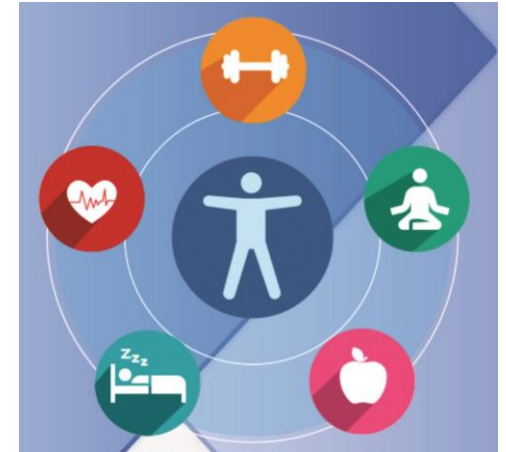
Public Areas

- Deployment through:
- ◆ Environmental Compensation;
 - ◆ Municipal Budget;
 - ◆ National and International Financing.



Linear Park Program

Now we have an increasingly multidisciplinary look, bringing all stakeholders.



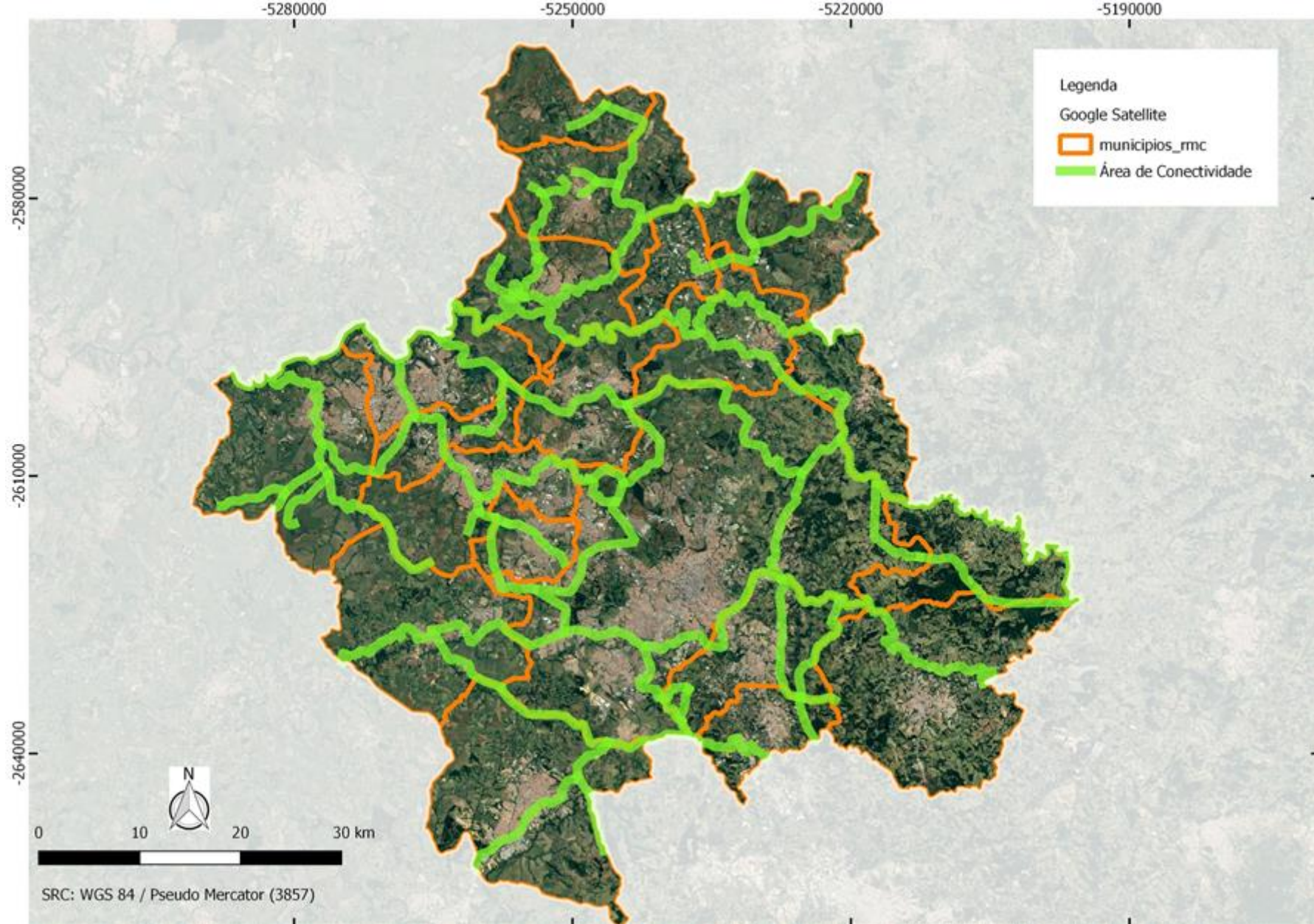
Linear Park Program

Listen to the demands and local knowledge of civil society



The experience of Campinas has shown, in the last 06 years:

- ◆ It is possible to promote interference in the territory.



RECONECTA RMC PROGRAM: CONNECTIVITY AREA Metropolitan Region of Campinas (Brazil)



<http://www.campinas.sp.gov.br/governo/meio-ambiente/parques-lineares.php>

Thank you

Gabriel Dias Mangolini Neves

Environment Licensing / RECONECTA RMC Program/ Linear park Program
Secretariat of Green, Environment and Sustainable Development

Campinas City Hall

gabriel.neves@campinas.sp.gov.br

gabriel.dm.neves@gmail.com

+55 11 995400066